

CERTIFIED LAND CORNER RECORDATION

T 14 N
 1/4
 25 | 30
 R 67 W | R 66 W

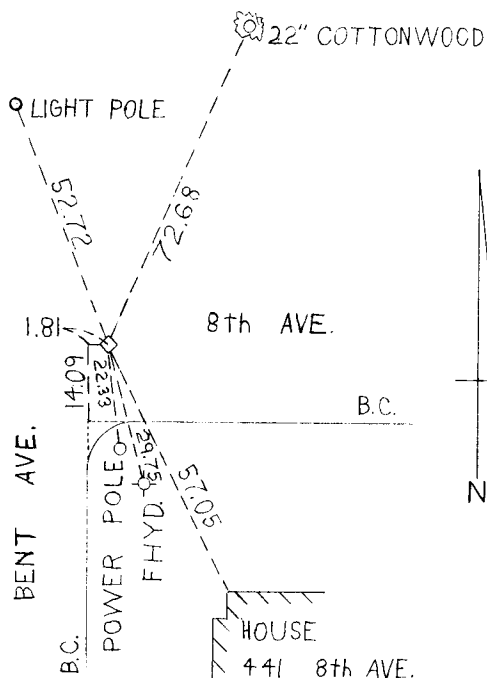
DESCRIPTION OF CORNER EVIDENCE FOUND, AND ORIGINAL RECORD (if known)

FOUND SANDSTONE, FIRMLY SET, WITH CAN OVER TOP OF STONE

DESCRIPTION OF MONUMENT AND ACCESSORIES ESTABLISHED TO PERPETUATE THE ORIGINAL LOCATION OF THIS CORNER:

SET 5/8" REBAR WITH SURVKAP LS.2500 ON TOP OF STONE.

SKETCH, WITH COURSE AND DISTANCE TO ADJACENT CORNER IF DETERMINED IN THIS SURVEY.
 (May Sketch or Paste Reproduction on Reverse Side.)



I, JOHN A. STEIL certify that I have carefully performed or reviewed the work done on the diagrammed corner as reported on this recordation form and approve the same.

John A. Steil
 Signature of Surveyor

2500
 Registration No.

STATE OF WYOMING,

Office of Clerk and Recorder,

County of Carbon

This "corner record" was filed for record on the _____ day of JAN 7 1982, 19____, was noted on the cross-index plat and is assigned page No. _____, in book No. _____.

Janet C. Whitehead
 County Official

Cross Index No. <u>T-1</u>	T. <u>14</u>	R. <u>66</u>	Mer.
<u>T-25</u>	T. <u>14</u>	R. <u>67</u>	Mer.
_____	T. _____	R. _____	Mer.
_____	T. _____	R. _____	Mer.
_____	T. _____	R. _____	Mer.
_____	T. _____	R. _____	Mer.
_____	T. _____	R. _____	Mer.

T-1 14-66